

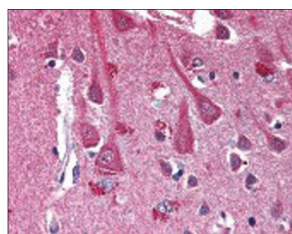
ANTIBODIES FOR HIV RESEARCH...

PROSCI RESEARCH AND PUBLICATIONS

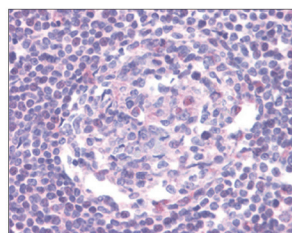
ProSci Incorporated specializes in the production of affinity-purified, monoclonal and polyclonal antibodies to novel antigens in many areas of **Infectious Disease Research**. In addition to our expertise in developing the reagents, we are actively involved in research in a variety of disciplines such as tumor-marker discovery, proteomics analysis and stem-cell manipulation.

Most notably, ProSci is dedicated to research in HIV vaccine development. Antibodies developed by ProSci for use in our research labs are also available to you, and are cited in our most recent HIV-related publications (*J Virol.* 2009 May;83(10):4861-70 and *J Virol.* 2008 Jul;82(13):6447-57)

PRODUCT	CAT. NO.	APP.	DESCRIPTION
CCR5 Antibody	1112	E, WB, IHC	Rabbit anti-CCR5
APOBEC3G Antibody	3257	E, WB, IHC	Rabbit anti-APOBEC3G (N-terminus)
APOBEC3G Antibody	46-731	E, WB	Goat anti-APOBEC3G
CXCR4 Antibody	1012	E, WB	Rabbit anti-CXCR4 Extracellular Loop
CXCR4 Antibody	1009	E, WB, ICC, IP	Rabbit anti-CXCR4 (N-terminus)
CXCR4 Monoclonal Ab	49-232	IHC, IF, FC	Mouse anti-CXCR4 (human, monkey, baboon and chimp)
CXCR4-Lo Antibody	4443	E, WB	Rabbit anti-CXCR4Lo (N-terminus)
DC-SIGN Antibody	2347	E, WB, IHC	Rabbit anti-DC-SIGN
DC-SIGN Antibody	2349	E, WB, IHC	Rabbit anti-DC-SIGN Extracellular Domain
DC-SIGN Monoclonal Ab	PM-2348	E, WB, IHC	Mouse anti-DC-SIGN Extracellular Domain
DC-SIGN Monoclonal Ab	PM-2347	E, WB, IHC	Mouse anti-DC-SIGN Extracellular Domain
HIV-1 Co-Receptor Antibody Set	PSI-1818	WB, IHC	One vial each: Bonzo, CCR3, CCR5, CCR8, CX3CR1, CXCR4, DC-SIGN, and GPR15
Retrovirus Restriction Factor Antibody Set	PSI-1817	WB, IHC	One vial each: AID, APOBEC3G, TRIM5 α , UNG1, and UNG2



Immunohistochemical staining of CXCR4 in brain cortex (formalin-fixed paraffin-embedded) using mouse anti-CXCR4 mAb (Cat. No. 49-232)



Immunohistochemical staining of human lymph node using Rabbit anti-CCR5 (included in HIV-1 Co-Receptor Antibody Set; Cat. No. PSI-1818)

See www.prosci-inc.com for additional antibodies important for HIV and other areas Disease Research:

HIV-gp120, HIV-gp41, and TRIM5- α , - δ , - γ

Influenza: Swine Origin, Season and Avian

Anthrax

Hepatitis

RSV

Adenovirus

Bacteria and Fungi

SARS

West Nile Virus

EBV